



If you have any problems, please contact Smart Solar before returning to the place of purchase.

For immediate answers visit our website www.smartsolar.com where you will find extensive trouble shooting, FAQs and support.

usa
tel : +1 813 343 5775 Mon-Sat 9am-7pm (EST)
email: ussupport@smartsolar.com

uk
tel : +44 (0) 8448 009 163 Mon-Sat 9am-7pm (GMT)
email : uksupport@smartsolar.com

germany
tel : +49 (0) 180 5294365
(0,12 € pro Minute aus dem Festnetz der T-Com)
email : servicede@smartsolar.com
smart solar ltd, Ruenhorst 24, 46395 Bocholt

france
tel : +33 344 600 862
email : tristram@smartsolar.com
smart solar ltd, 14 rue du Beau Larris, 60260 Lamorlaye

europa
email : eusupport@smartsolar.com

australia
tel : +61 03 9512 0680
email : service@aspenwood.com.au

asia/ pan pacific
email : service@tgs.co.th

www.smartsolar.com

japanese tea gardens solar powered birdbath

operates in direct sunlight



Please note:

If the water is likely to freeze the pump& panel must be removed from the water feature and stored in a dry frost proof environment. The water feature can remain outside.

The pump must never be operated dry (out of water) as this will have a permanent adverse affect on the performance of the pump.

Spare parts

- | | |
|---------------------------|----------|
| 1. Solar panel | 2060AS01 |
| 2. Pump | 20020P01 |
| 3. Pump impeller | IMPELLER |
| 4. Pump cover with filter | PCOVER |
| 5. Fountain head set | 2062FH |

Full 2 year warranty

If within 24 months from the date of purchase this product fails due to a defect in material or workmanship, Smart Solar will replace or repair free of charge.

Please report immediately if there is any damage or missing pieces upon receipt of goods.

The warranty does not apply to:

Damage caused by accidents, abuse, poor handling, frost or normal wear and tear. Products which have been subject to unauthorized repair or modification.

For further information please contact your nearest customer service centre detailed on the last page of this manual.

Waste electrical products should not be disposed of with household waste. Please recycle where facilities exist. Check with your local authority or retailer for recycling advice.



Smart Solar reserve the right to modify any product to enhance its' performance and design.

Contents

1. Introduction
2. Before you start
3. Overview
4. Components
5. Assembling and using your product
6. Cleaning and maintenance
7. Trouble shooting
8. Spare parts
9. Full 2 year warranty

Introduction

Thank you for purchasing a Japanese Tea Gardens. These instructions contain important information for using this product. Please keep them in a safe place for future reference.

Before you start

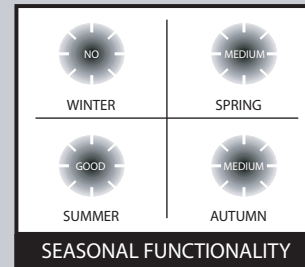
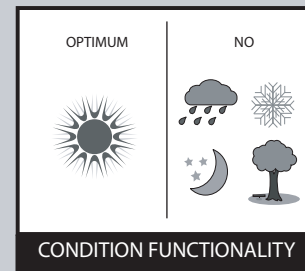
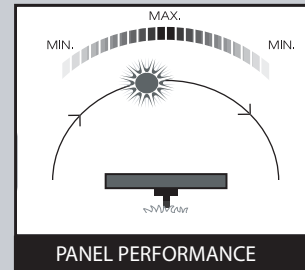
Decide on an appropriate outdoor location for your water feature. Ideally this should be on a flat surface. A solar panel powers the pump by converting sunlight into electricity.

The solar panel will power the pump when exposed to direct sunlight. If the sun passes behind a cloud then the amount of electricity produced by the panel will decrease and the pump will stop working or slow down. As soon as the sun reappears from behind the cloud the amount of electricity will increase instantly and the pump will begin to work again.

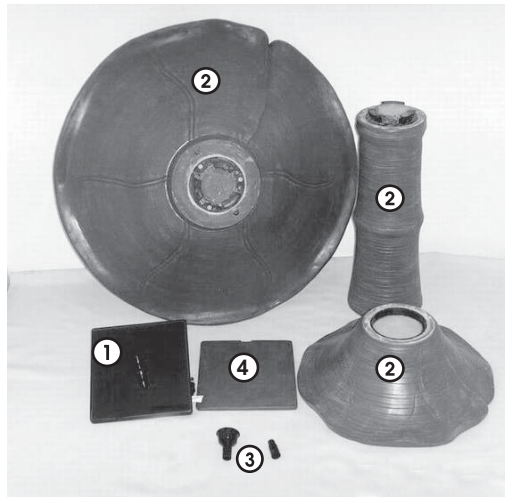
The amount of electricity produced by the solar panel is proportional to the strength of sunlight received. For optimum performance we recommend that your solar panel should be exposed to as much direct sunlight as possible and away from shady areas e.g. under trees.

Overview

The Japanese Tea Gardens has been designed for outdoor use. The pump drives water up through the fountain head and then sprinkles down into the resin bowl. The water is constantly re-cycled.



Components



- 1 Solar panel with attached pump unit
- 2 Resin birdbath top, stand and base
- 3 Fountain head set
- 4 Resin Plate (for winter/ holiday use)



Screw the resin stand onto the resin base



Screw the second tier to the resin stand



Clean the sprinkler head

Assembling and Using Your Product

Unpack all components carefully. Please ensure that you check all parts have been removed from the packaging. Decide on a suitable location, bearing in mind there will be some water splashes when the product is in use.

Assemble the parts as shown. When screwing together align the marks to ensure that the water feature remains level. Place the solar panel with attached pump unit into the recess in the main bowl and fill with water.

The Japanese Tea Gardens can operate with or without the fountainhead fitted. If using the fountainhead please check regularly that there is no excessive splashing causing the reservoir to run dry.

Please Note: We recommend you use distilled or rain water to prevent scale build up.

Please note: On first use there may be air in the pump. It can take up to 5 minutes until all the air is expelled and water begins to sprinkle from the fountain head.

Please note: If you are away from home for more than 2-3 days, remove the solar pump unit and insert the spare resin plate.

Cleaning and Maintenance

Pump: If, after a period of time, the pump starts to lose power or stops working check for the build up of sediment, scale or dirt in the filter and in the bottom of the pump housing. Carefully take out the top tier. Turn it upside down on a soft surface. Dry the solar pump connector and disconnect. Remove the pump cover at its' base. Take out the impeller and remove any sediment, scale or dirt that has built up. Replace the impeller and replace the pump cover.

IMPORTANT

To ensure the seal remains water-tight twist the pump and panels connectors together rather than merely pressing them together. Check that the yellow small rubber "o" ring remains in its' groove and is not pushed out when connecting. If this ring moves there will be no water seal and the pump and panel will eventually fail

Solar panel: The panel should be cleaned periodically with a soft tissue and proprietary glass cleaning solution. Regular cleaning of the panel is advised to maintain optimum conversion of the sun's energy into direct current.

Trouble Shooting

If you have any problems please contact Smart Solar before returning to the place of purchase. For immediate answers visit our website www.smartsolar.com where you will find an extensive trouble shooting section with frequently asked questions and instant email enquiry forms.

Pump is noisy and there is no water running through the tube

Take off the pump cover and remove the impeller. If the pump is still noisy without the impeller then seek a replacement. If the noise stops, clean the pump and replace the impeller and cover. This problem may repeat if the water contains debris, we recommend regular water changing.

Pump does not operate even though the solar panel is in full sunlight

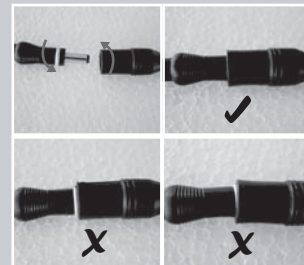
Check whether the impeller is blocked by removing the pump cover. If it is, then clean the pump as detailed above.

Pump does operate but there is no water running through the tube

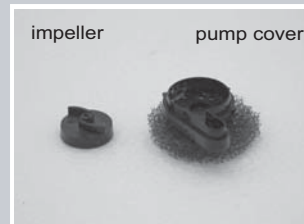
- 1) Check for the build up of sediment, scale or dirt in the filter and in the bottom of the pump housing as detailed above.
- 2) Check whether the pump cover is attached properly. If the pump cover is not pushed down tightly, the pump will not push water through the fountain.
- 3) If fitted, check the sprinkler head is not blocked. Remove the cap, rinse the parts in water to clean before re-assembling.



Turn upside down on a soft surface and attach the pump unit



Ensure the underwater connector is water tight



Remove pump cover



Take out impeller to clean