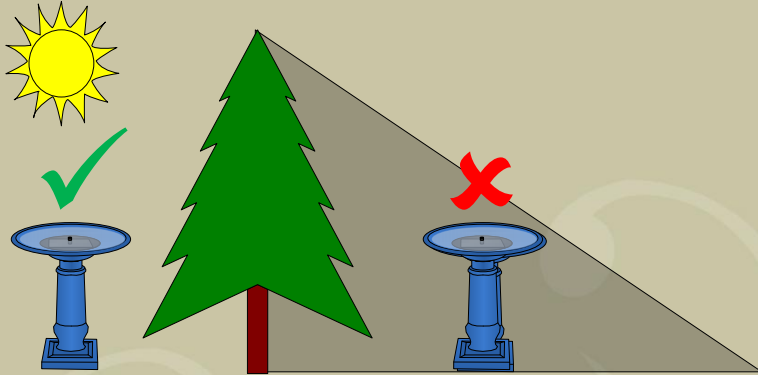


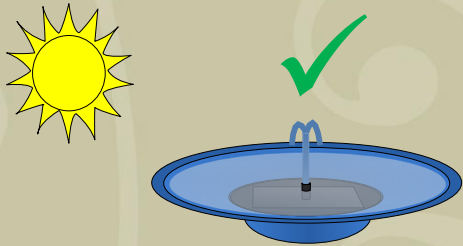
Position



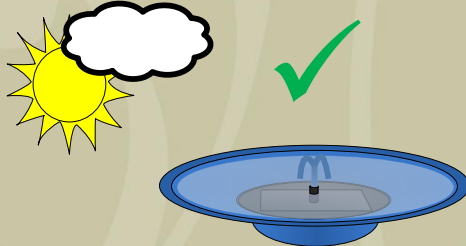
Position your fountain so that it receives direct sunlight. The fountain will not work if the solar panel is shaded.

Performance

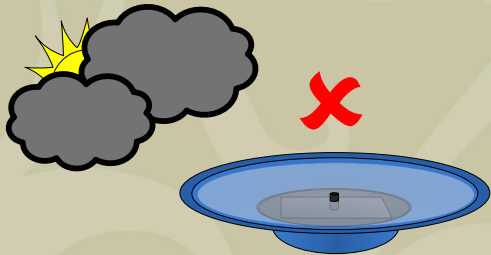
This product is designed primarily to operate in summer months but will also work in spring and autumn provided there is good sunshine. Performance is directly related to the amount and strength of sunlight received.



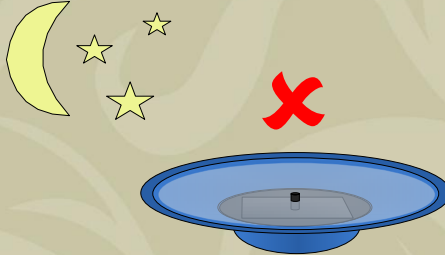
In bright direct sunlight your pump will work well with a consistent fountain height.



In slightly cloudy conditions your pump will work however fountain height will vary as clouds pass in front of the sun.

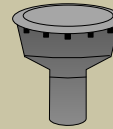


In overcast conditions the solar panel does not generate enough power to run the pump and it will NOT work.



At night the solar panel does not generate power and your pump will NOT work.

Accessories

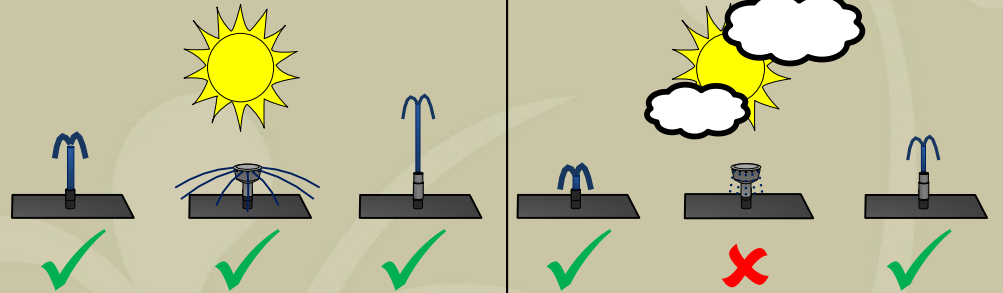


The fountain head accessory can be used to enhance your fountain. It will however only work effectively in bright sunlight or if the battery is charged.

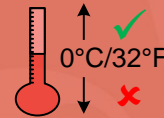


The short nozzle can be used to produce a finer higher stream of water.

Note: Take care when using the short nozzle in bright sunlight as the high water stream may cause splashing that will empty your birdbath. If this occurs simply remove the nozzle or ensure water level is maintained.

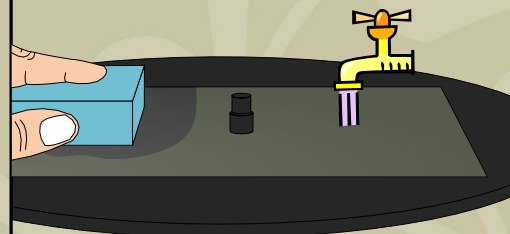


Frost

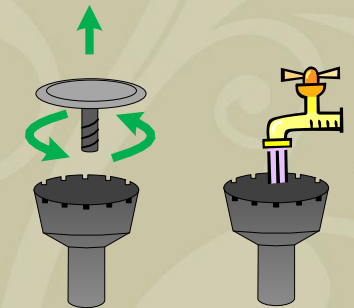


Frost can cause damage to the pump and fountain. The panel & pump assembly **MUST** be removed if the water is likely to freeze. We also recommend storing your entire fountain in a frost proof environment if temperatures are likely to remain consistently below freezing.

Maintenance

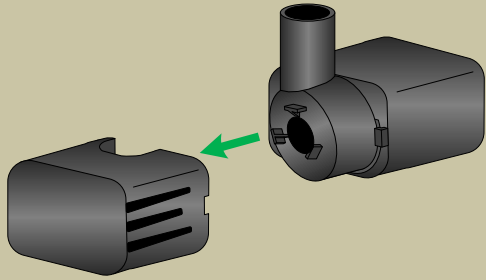


To maintain optimum performance regularly clean the solar panel using water or glass cleaner in conjunction with a non abrasive sponge or cloth.

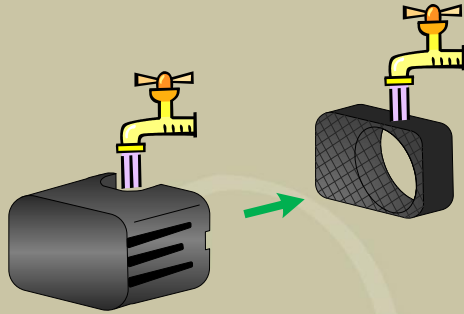


If the fountain head, nozzle or tubes become blocked rinse through with water.

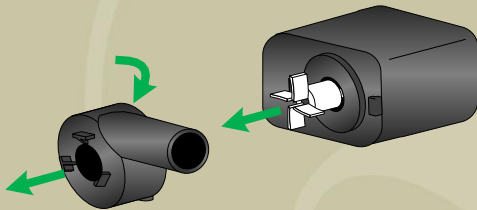
Pump Maintenance



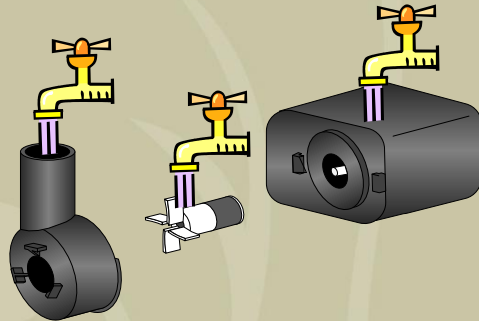
Filter cover can simply be pulled off as shown



Remove filter material and rinse in water



Turn impeller cover to release as shown, impeller can then be easily removed



Rinse all parts thoroughly in water

We recommend that you regularly carry out maintenance and water changes to ensure optimum performance of your fountain.

Problem Solving

If you have any problems with your solar birdbath please follow the steps below.

1. Check the fountain is positioned correctly, receiving sunlight and not in shade
2. Check water level and ensure the pump is submerged
3. Check connection between the pump and panel
4. Check tubes, fountain heads and nozzles are clean and unblocked
5. Clean pump and panel as shown and change water
6. If problems persist contact customer services (refer to contact sheet or website)

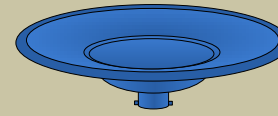
US Patent 7,484,671 & EU Patent 1648620

www.smartsolar.com

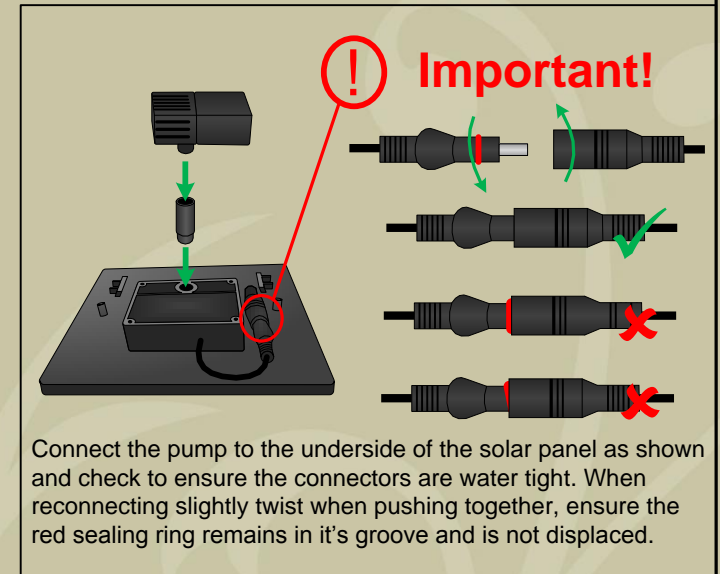
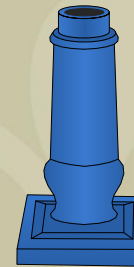
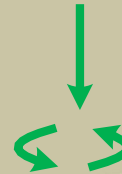
Athena solar birdbath fountain



Assembly



Simply locate the main bowl onto the pedestal and turn it to lock in place.



Place the solar panel/pump assembly into the recess in the centre of the birdbath bowl and fill with water.

Note: Water must be regularly topped up. We recommend regularly changing the water to ensure it remains clean and free from debris.

