

MODEL: 50151COP
ASSEMBLY INSTRUCTIONS
READ AND SAVE THESE INSTRUCTIONS

READ INSTRUCTIONS ALL THE WAY THROUGH PRIOR TO ASSEMBLY.

THIS FOUNTAIN SHOULD TAKE APPROXIMATELY 30 MINUTES TO ASSEMBLE.

MAKE SURE ALL PARTS ARE FIRMLY TIGHTENED.

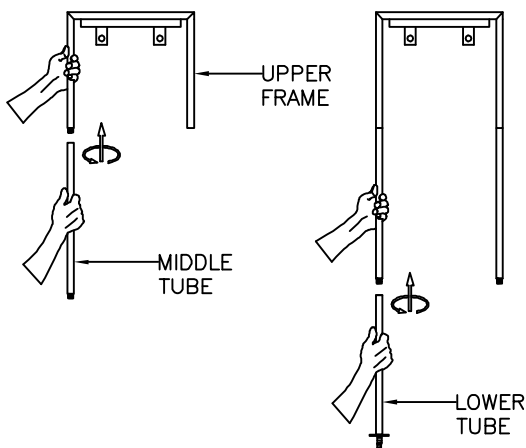
UNPACK THE FOUNTAIN

YOU SHOULD HAVE RECEIVED THE FOLLOWING PARTS:
 LIGHT ASSEMBLY WITH (2) SCREWS, UPPER FRAME, (2) UPPER TUBES, (2) LOWER TUBES, (4) SLATE PANELS, (2) LARGE WASHERS, (2) NUTS, LID, PLASTIC FRAME, (8) FLAT SCREWS, (8) CAP NUTS, (2) SCREWS, (2) SMALL WASHERS, RESERVOIR, (3) MR-16 BULBS, TRANSFORMER, SUBMERSIBLE PUMP, RUBBER HOSE AND A BAG OF RIVER STONES.

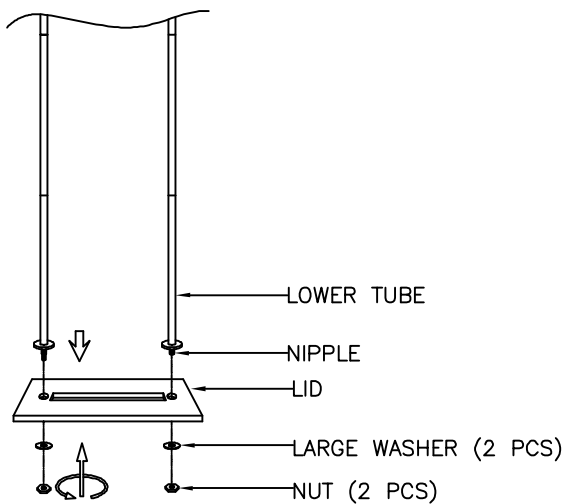
TOOLS NEEDED (NOT SUPPLIED):
 ADJUSTABLE WRENCH AND SCREWDRIVER.

FOUNTAIN ASSEMBLY

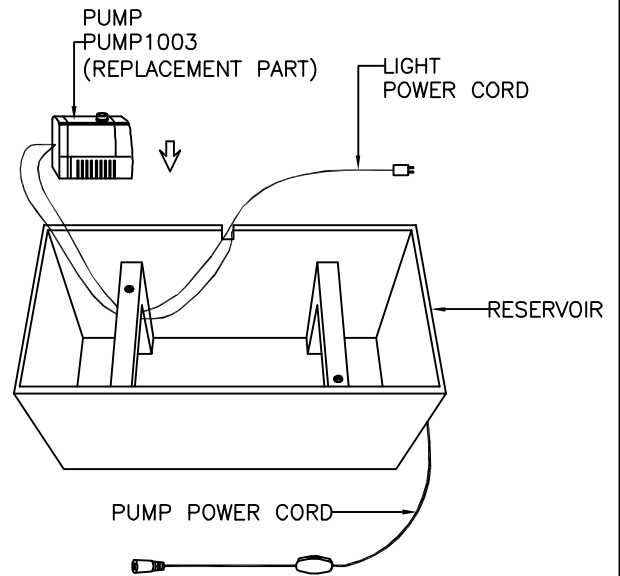
1. JOIN FRAME AND TUBES TOGETHER STARTING WITH TO TOP U FRAME AND WORKING DOWN.



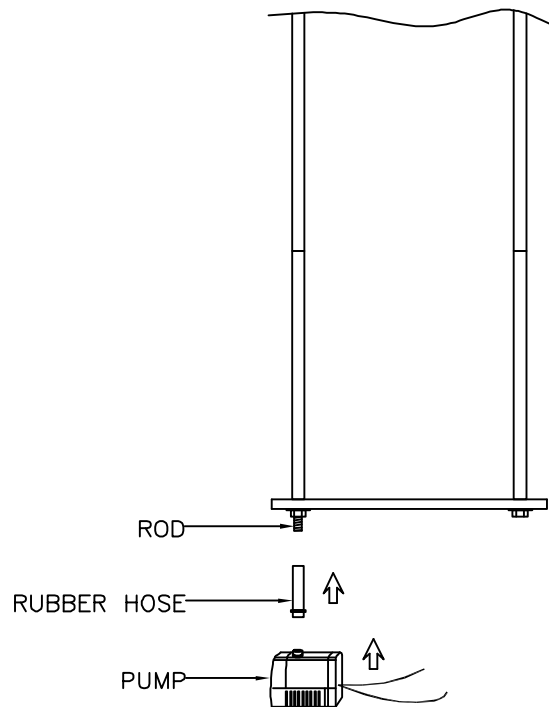
2. INSERT NIPPLES OF LOWER TUBES THROUGH LID, THEN SECURE WITH (2) LARGE WASHERS AND (2) NUTS.



3. PLACE PUMP INTO RESERVOIR, THEN RUN PUMP POWER CORD AND LIGHT POWER CORD UP AND OVER BACK OF RESERVOIR AS SHOWN.

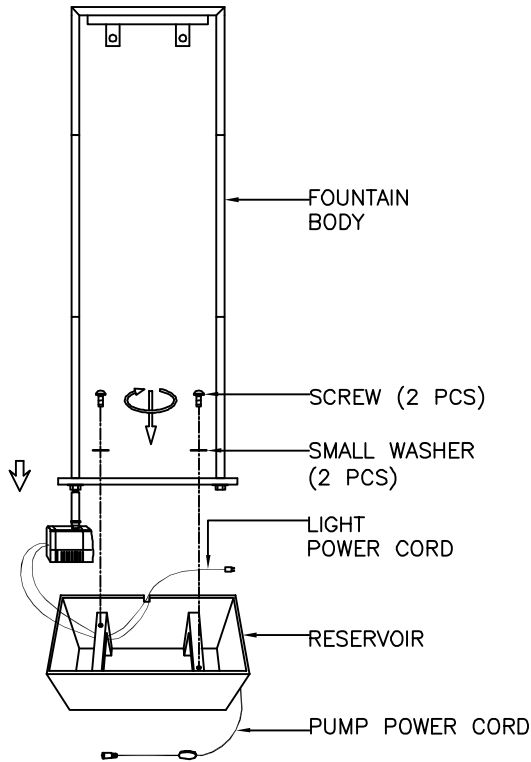


4. ATTACH RUBBER HOSE TO ROD AND ATTACH THE RUBBER HOSE TO PUMP.

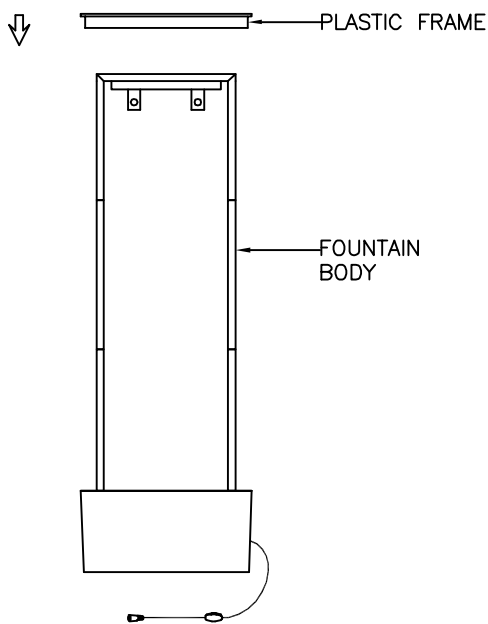


MODEL: 50151COP
ASSEMBLY INSTRUCTIONS

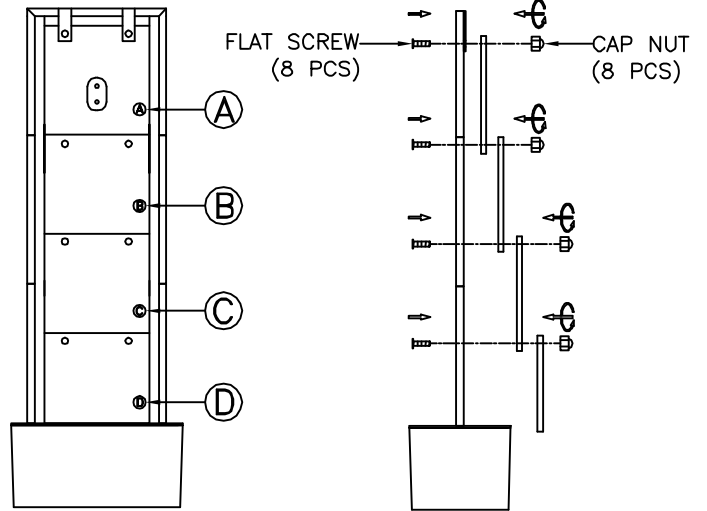
5. PLACE FOUNTAIN BODY ONTO THE RESERVOIR, THEN SECURE WITH (2) SMALL WASHERS AND (2) SCREWS.



6. PLACE PLASTIC FRAME ONTO THE RESERVOIR FROM TOP OF THE FOUNTAIN BODY. MAKE SURE PUMP POWER CORD AND LIGHT POWER CORD SIT IN THE NOTCH.



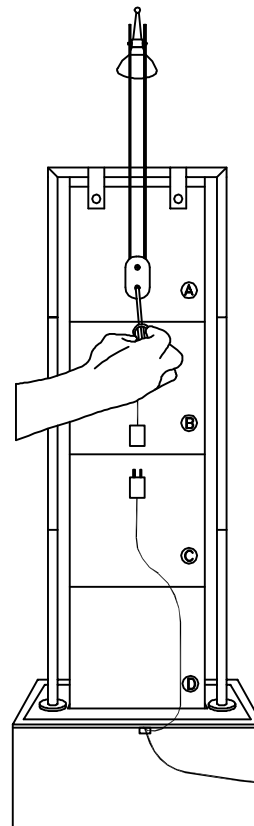
7. ATTACH SLATE PANELS TO CLIPS ON FRAME, THEN SECURE WITH (8) FLAT SCREWS AND (8) CAP NUTS. (MAKING SURE TO ATTACH THE SLATE PANELS IN CORRECT ORDER)



BACK VIEW:

SIDE VIEW:

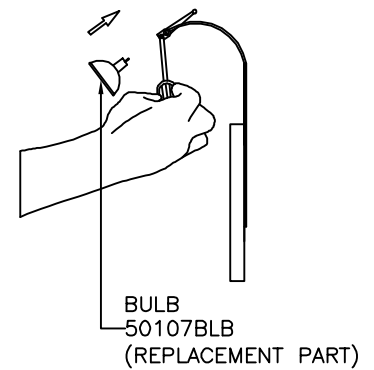
8. ATTACH LIGHT ASSEMBLY TO TOP SLATE PANEL WITH (2) SCREWS, THEN INSTALL A MR-16 BULB. (FREE REPLACEMENT BULBS INCLUDED)



BACK VIEW:

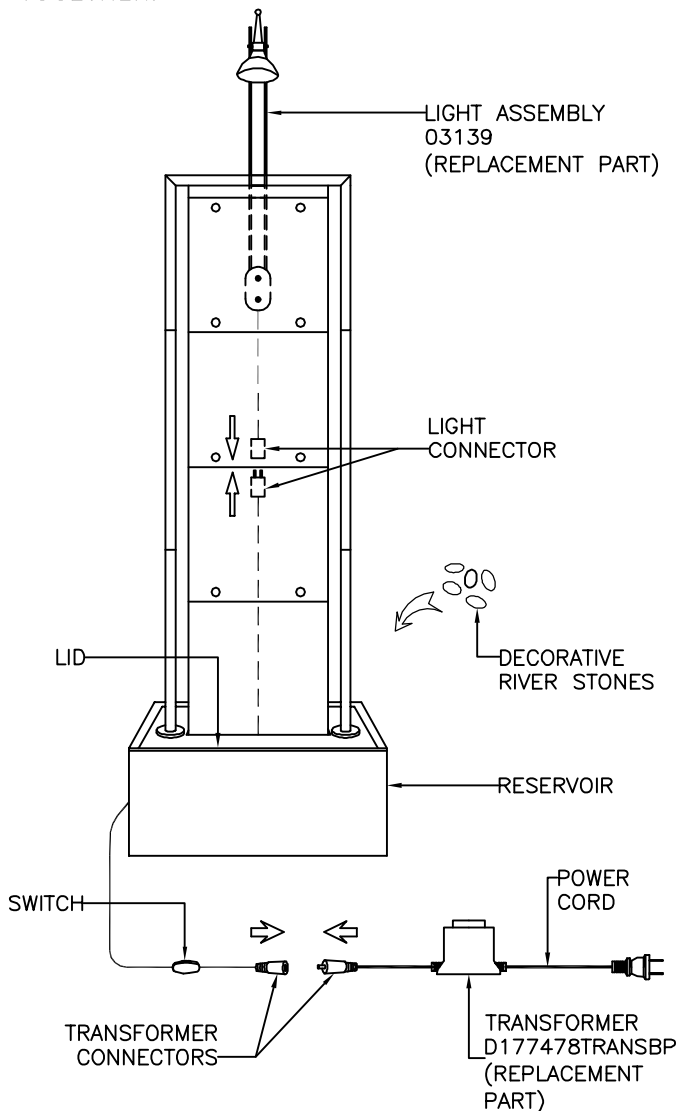
INSTALL BULB:

LOOSEN (2) SMALL SCREWS IN SOCKET TO REMOVE BULB.



MODEL: 50151COP
ASSEMBLY INSTRUCTIONS

9. PLACE DECORATIVE STONES ONTO LID.
10. FILL RESERVOIR WITH 2.8 GALLONS OF WATER TO COMPLETELY SUBMERSE THE PUMP.
NOTE: DISTILLED WATER IS RECOMMENDED TO REDUCE MINERAL DEPOSITS AND BACTERIA BUILD-UP.
11. JOIN THE LIGHT CONNECTORS TOGETHER.
12. JOIN THE TRANSFORMER CONNECTORS TOGETHER.



13. PLUG POWER CORD INTO OUTLET AND TURN ON AT SWITCH, YOUR NEW FOUNTAIN IS READY FOR USE.

TROUBLE SHOOTING

1. IF YOUR FOUNTAIN DOES NOT WORK, CHECK PLUG AT THE SOCKET. MAKE SURE THE PLUG IS FULLY AND PROPERLY INSERTED INTO THE WALL OUTLET.
2. NEXT CHECK TO MAKE SURE THE OUTLET IS POWERED.
3. IF THE FOUNTAIN STILL DOES NOT WORK, PLEASE CONTACT YOUR DISTRIBUTOR OR PLACE OF PURCHASE.

SPLASHING DISCLAIMER

SPLASHING MAY OCCUR WHEN FOUNTAIN IS INITIALLY TURNED ON. PROTECT SURROUNDING SURFACES AS NEEDED.

IMPORTANT PUMP INFORMATION

PUMP MUST BE FULLY SUBMERSED IN WATER WHILE OPERATING.

WATER

TO REDUCE MINERAL DEPOSITS AND BACTERIA BUILD UP, THE USE OF DISTILLED WATER IS RECOMMENDED.

WARNING

* THIS FOUNTAIN IS RATED FOR INDOOR USE ONLY.

** ONCE A WEEK INSPECT FOUNTAIN, FLOOR AND ADJACENT WALL FOR MOISTURE BUILD-UP AND CLEAN AS NECESSARY. THIS IS ESPECIALLY IMPORTANT FOR HUMID ENVIRONMENTS.

*** MADE FROM GENUINE RAW COPPER, THIS FOUNTAIN WILL NATURALLY AGE OVER TIME TO CREATE A UNIQUE LOOK AND FEEL.

**** THIS UNIT MUST BE CONNECTED TO A SUPPLY CIRCUIT THAT IS PROTECTED BY A GROUND FAULT CIRCUIT INTERRUPTER (GFCI). THE GFCI SHOULD BE TESTED ON A ROUTINE BASIS. TO TEST THE GFCI, PUSH THE TEST BUTTON. THE GFCI SHOULD INTERRUPT POWER. PUSH THE RESET BUTTON. POWER SHOULD BE RESTORED. IF THE GFCI FAILS TO OPERATE IN THIS MANNER, THE GFCI IS DEFECTIVE.

AVAILABLE PARTS ARE:

- 50107BLB (BULB)
- 03139 (LIGHT ASSEMBLY)
- PUMP1003 (PUMP)
- D177478TRANSBP (TRANSFORMER)