

# SOLAR PUMP KIT USER'S MANUAL

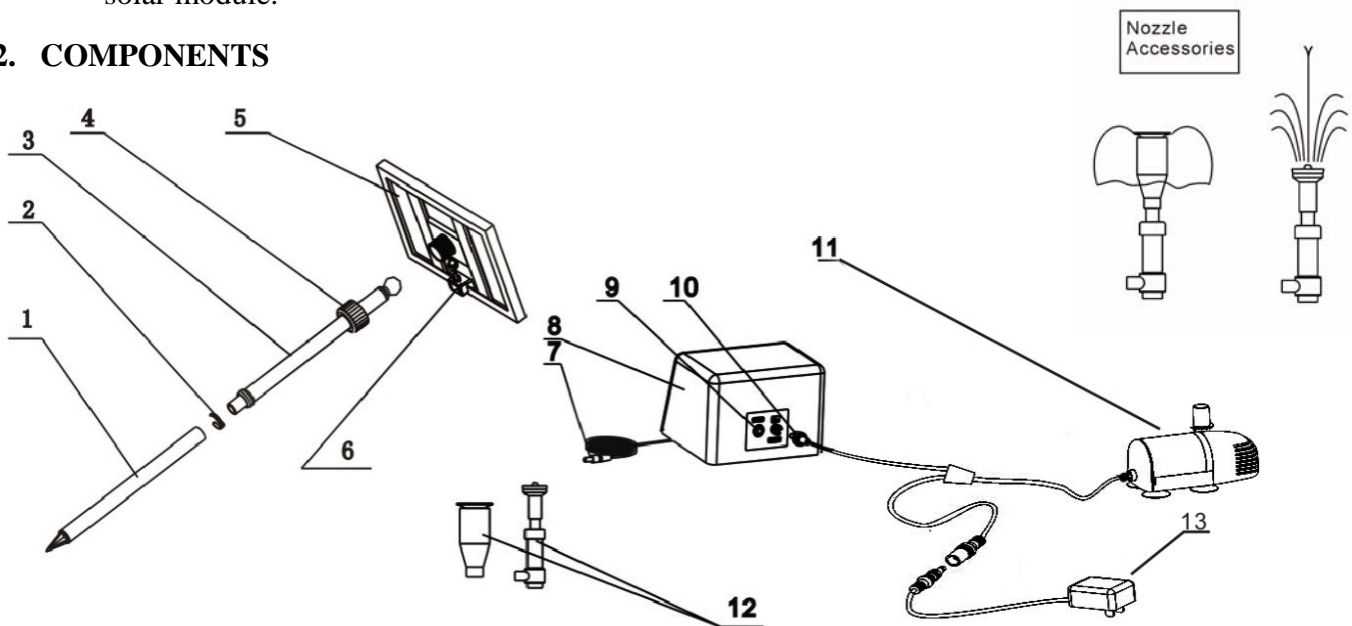
Design for fountain

Model No. M85994

## 1. OVERVIEW

- 1) The solar pump is designed for indoor or outdoor fountain use, and is powered by a solar module. In order to make the pump work by solar energy, the solar module needs to be placed in the sunlight facing the sun.
- 2) The performance of the pump depends on the sunlight intensity and the orientation of the solar module.

## 2. COMPONENTS



- 1). Pole 1;      2). Wire clamp    3). Pole 2      4). Adjusting knob    5). Solar panel  
6). Solar panel socket    7). Plug to the panel    8). Stone with Chargeable Battery    9). Switch (Pressing down open)  
10). Plug to the stone    11). Pump BLP750    12). Nozzle Accessories    13). AC/DC Adaptor

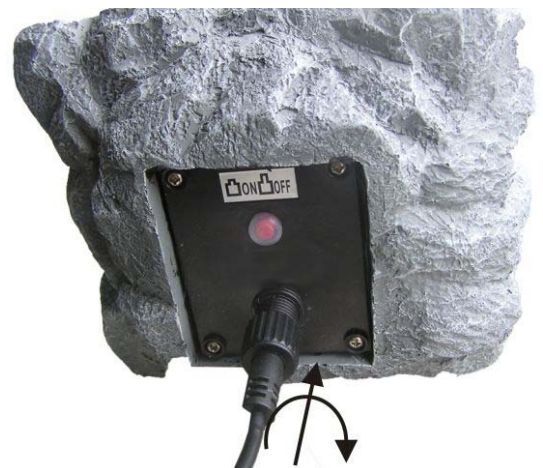
## 3. ASSEMBLING

- 1) Unpack all components carefully.
- 2) Connect the pump to the solar panel.
- 3) Connect the nozzle with the pump tube, the nozzle can produce 2 different jet shape like the above picture.
- 4) Make sure to place the pump fully underwater when the pump operates.
- 5) To produce the excellent fountain effect, please kindly leave the fountain head or nozzle 5 - 10cm above the water surface.
- 6) The solar pump is now ready to operate.
- 7) Connect the plug on the pump to the socket on the resin rock (see the right photo for demonstration).

## 4. CAUTIONS

Note the ON/OFF switch located at the rear of the rock.

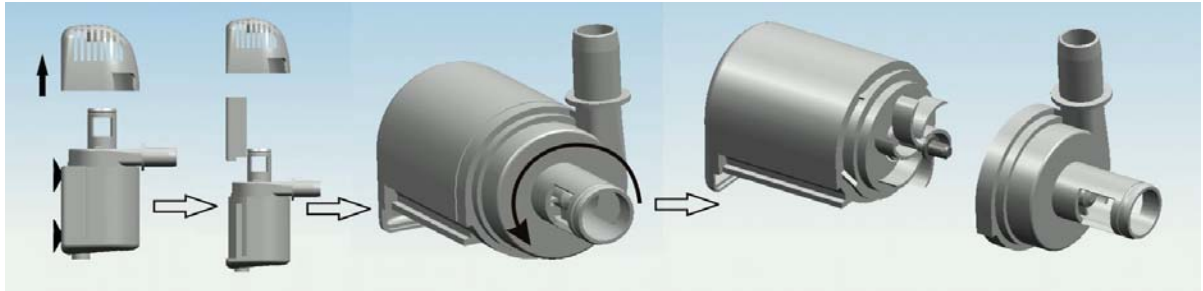
Turning the switch to ON will cause the fountain to work during adequate sunlight. During adequate sunlight, some of the solar energy is stored for additional operation after loss of sunlight.



Turning the switch to OFF will store the energy that is gained during sunlight and will extend the operation when there is no sunlight. Turn the switch to ON at any time to begin the flow.

- 1) Any altering of the product itself or changing of the components is forbidden.
- 2) Do not connect the pump to any AC voltage power directly, it's ONLY for DC Voltage power .
- 3) Operate the pump in freshwater or saltwater only(never above 50°C), especially keep it away from flammable liquids.
- 4) Do not strike the solar panel.
- 5) Do not let the pump run dry.

## 5. CLEANING AND MAINTENANCE



If after some time the pump starts losing power or stops working, please clean up sediment in the pump shell or filter cribs. Kindly note the pump can be opened by pressing down at the bottom of the filter housing(See the above photo for demonstration ).

To clear the impeller, open the pump housing at the front by sliding up the front plastic cover.

**\*The solar module should only be cleaned with soft tissue or propriety glass cleaning solution.**

## 6. FUNCTIONALITY PROBLEMS

\*Pump does not operate even though the solar panel is in full sunlight.

- 1). No connection to the solar module—check connection to the solar module.
- 2). Impeller is blocked—to clean the pump, remove the front plate and the impeller, use a brush or water to remove any debris.

**\*Pump does operate but there is no water running through the tubes: Clear the tube and the filter to make sure the tube is through completely.**

## 7. TECHNICAL DATA

Operation Voltage	16 Volt
Peak Power of Solar Panel	6 Watt
Maximum Water Lift Height	1.2 Meter
Maximum Flow Rate	500 Litres per Hour
Cable Length	5 Meter